

Stronger Communities Select Committee

Chief Inspector Ant Alcock

Help people

Keep people safe

Catch criminals



How we work

WITH EACH OTHER

Support each other

Act fairly and respectfully

Follow the Code of Ethics

Promote inclusivity, equality and diversity

WITH COMMUNITIES AND PARTNERS

Build trust and confidence

Clarify our role and purpose

EFFICIENTLY AND EFFECTIVELY

Use intel, data and evidence to make decisions

Develop, learn and improve

Skilled, equipped and enabled to use technology

Make the most of our resources

Our priorities

To prevent, investigate and tackle:



VIOLENCE IN ALL ITS FORMS



ONLINE CRIME



ANTI-SOCIAL BEHAVIOUR



GANGS AND ORGANISED CRIME



SAFETY / CRIME ON THE ROADS



DOMESTIC ABUSE



BURGLARY

To support and protect:



CHILDREN AND VULNERABLE PEOPLE



VICTIMS OF CRIME



VISIBILITY IN COMMUNITIES

Main effort

Victims

Vulnerability

Violence

Visibility



Current Policing Matters

- Exiting Lockdown
- Police Crime Sentencing and Courts Bill
- Violence Against Women and Girls
- Equality, Diversity, Inclusion and Cohesion



Essex Police Diversity, Equality and Inclusion Strategy 2020-2025

Our Objectives*

*Public Sector Equality Objectives

Improve inclusive culture and increase awareness and understanding of diversity and equality

through delivery of mandatory training, equality data analysis, equality and health impact assessment, and effective community engagement.

Adopt and advance

the NPCC Diversity, Equality and Inclusion Strategy 2018-2025 and accompanying toolkits.



Increase satisfaction and confidence

amongst protected groups, wider communities and victims of crime. Tackle hate crime and address any complaints and concerns raised.

Attract, recruit, progress and retain a more diverse workforce

that better reflects our communities to improve confidence in Essex Police.

Narrow the disparity

between protected groups and non-protected groups in respect of the use of police powers such as stops, searches and the use of force. Improve the experience of policing services without reducing the legitimate use of police powers to protect communities.

Outcome:
Policing with the consent of all communities



FIND OUT MORE ON CONNEXION: PEOPLE > DIVERSITY AND INCLUSION



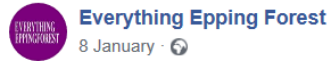
Policing Makeup

- Local Policing Teams (LPT)
- Community Policing Teams (CPT)
- Criminal Investigation Department (CID)



Delivering Community Priorities

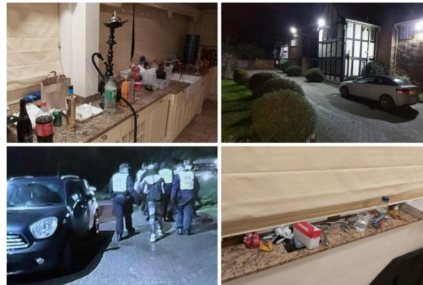
- Closure Orders
- Saving Lives
- Meridian Way
- Arson Series
- Conviction of Terence Glover



BREAKING: Terence Glover has been given indefinite hospital order after killing Harley Watson by deliberately driving his car at him. A number of others were hurt. He will serve 15 years for manslaughter with concurrent 10-year sentence for attempted murders in secure hospital.

Knoll House Covid-19 party rental property closed by police

By Lewis Berrill | [@LewisBerrill](#)
Chief reporter - east London and west Essex



A man has been charged following a car fire in Bradley Road, Waltham Abbey, on 15 August.



Mohammed Azizi, 29, of Bradley Road, Waltham Abbey, was charged today, Thursday 27 August, with committing arson with recklessness as to whether life was endangered.

He was also charged with possession of cocaine.

He is due to appear at Chelmsford Magistrates' Court tomorrow, Friday 28 August.

We remind people not to make any comments that could identify those involved or that could prejudice the ongoing investigation and court proceedings.



Performance

12% reduction on overall crime

Approximately 40% of violent crime is in a domestic abuse setting

38% reduction in dwelling burglary, yet 5 more solved

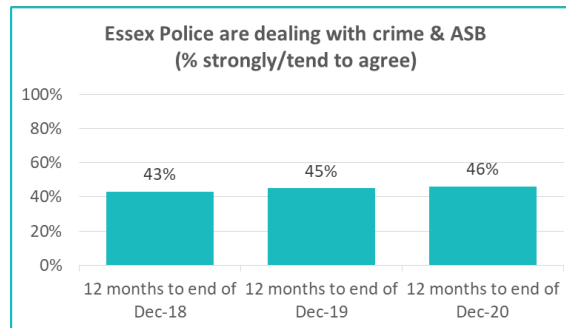
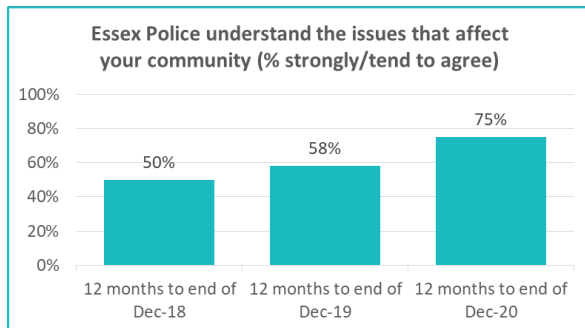
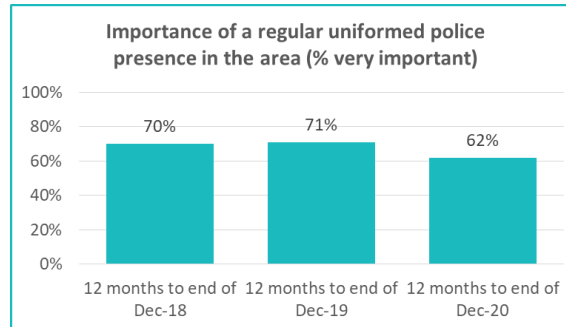
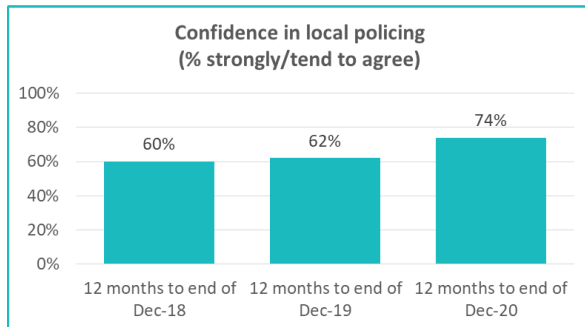
45% increase in Racially or Religiously Aggravated offences 270% increase in solved outcomes

197 fewer domestic abuse crimes reported

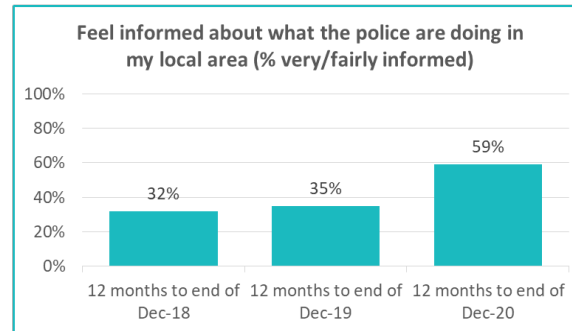
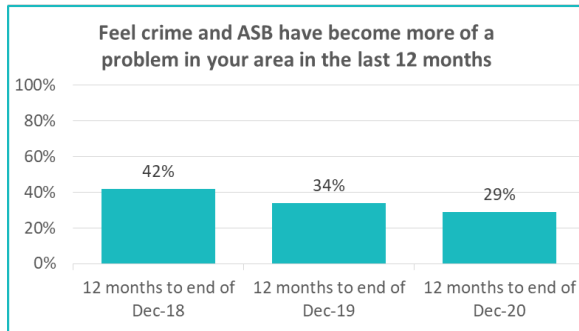
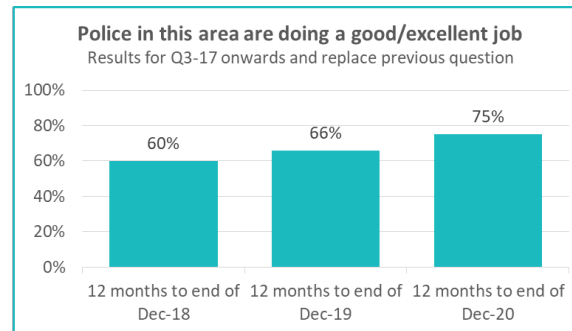
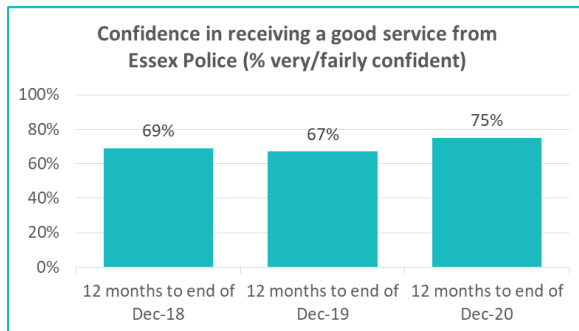
Crime Type	% DA 2021	Offences					Solved Outcomes					Solved Rates %		
		2020	2021	# diff.	% diff.	% All 2021	2020	2021	# diff.	% diff.	% All 2021	2020	2021	% pt. diff.
Anti-Social Behaviour (Incidents)	-	2669	4143	1474	55.2	-	-	-	-	-	-	-	-	-
All Crime (excl. Action (NFIB) Fraud)	16.8	11613	10196	-1417	-12.2	100.0	1146	1558	412	36.0	100.0	9.9	15.3	5.4
- Violence with Injury	44.1	892	758	-134	-15.0	7.4	120	136	16	13.3	8.7	13.5	17.9	4.5
- Violence without Injury	43.2	1603	1446	-157	-9.8	14.2	112	168	56	50.0	10.8	7.0	11.6	4.6
- Stalking and Harassment	27.4	1406	1559	153	10.9	15.3	88	111	23	26.1	7.1	6.3	7.1	0.9
Robbery	1.1	153	90	-63	-41.2	0.9	7	8	1	14.3	0.5	4.6	8.9	4.3
- Robbery of business property	0.0	9	4	-5	-55.6	0.0	0	1	1	-	0.1	0.0	25.0	25.0
- Robbery of Personal Property	1.2	144	86	-58	-40.3	0.8	7	7	0	0.0	0.4	4.9	8.1	3.3
- Burglary Dwelling (pre-Apr 17 definition)	0.9	569	351	-218	-38.3	3.4	21	26	5	23.8	1.7	3.7	7.4	3.7
- Theft from a Vehicle	0.0	989	611	-378	-38.2	6.0	9	3	-6	-66.7	0.2	0.9	0.5	-0.4
- Theft of a Vehicle	1.6	640	490	-150	-23.4	4.8	17	21	4	23.5	1.3	2.7	4.3	1.6
Racial/Religiously Aggravated Offences	0.0	110	160	50	45.5	1.6	10	37	27	270.0	2.4	9.1	23.1	14.0
Hate Crime HO Definition	2.2	186	271	85	45.7	2.7	23	38	15	65.2	2.4	12.4	14.0	1.7
Domestic Abuse	100.0	1905	1708	-197	-10.3	16.8	143	200	57	39.9	12.8	7.5	11.7	4.2



Epping Forest Q3 2020/21 Public Perception Survey Results



Epping Forest Q3 2020/21 Public Perception Survey Results



2021

- Disruptor Teams
- Domestic Abuse Problem Solving Teams
- Community Safety Team



Questions?

